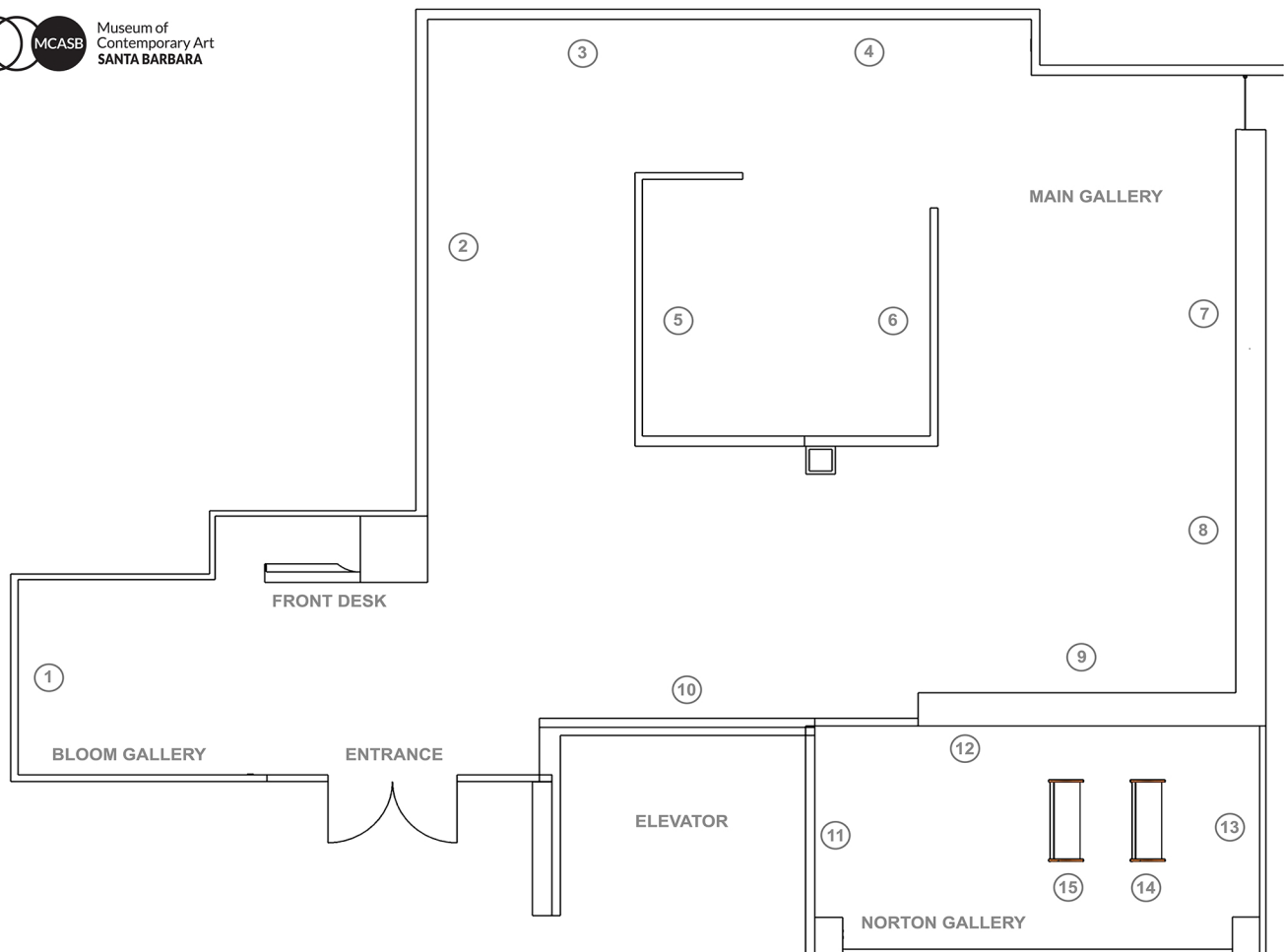


# Bloom Projects

## Genevieve Gaignard

### *Outside Looking In*

March 5 - May 31, 2020



1. *Seeing Is Believing*, 2018, Dimensions Variable, Courtesy the Artist and Vielmetter Los Angeles.

2. *Mama Dearest*, 2017, Chromogenic print, 36 x 54 in, Courtesy Collection of Marcia & Barry Maiten.

3. *Neighborhood Watch*, 2017, Chromogenic print, 20 x 30 in, Courtesy Collection of Kai Loebach.

4. *Hidden Fences*, 2017, Chromogenic print, 30 x 45 in, Courtesy the Artist and Vielmetter Los Angeles.

5. *Black is Beautiful*, 2016, Dimensions Variable, Courtesy the Artist and Vielmetter Los Angeles.

6. *Be More*, 2018, Dimensions Variable, Courtesy the Artist and Vielmetter Los Angeles.

7. *Basic Cable and Chill*, 2016, Chromogenic print, 30 x 20 in, Courtesy Robert Shiell Collection.

8. *Elephant in the Room*, 2017, Chromogenic print, 27 x 40.5 in, Courtesy Collection of Kai Loebach.

9. *Ascension (New Extensions)*, 2017, Chromogenic print, 32 x 48 in, Courtesy the Artist and Vielmetter Los Angeles.

10. *Smell the Roses*, 2016, Chromogenic print, 32 x 48 in, Courtesy Tina Perry-Whitney & Ric Whitney.

11. *Goddamn—Refreshing*, 2019, Mixed media on panel, 40 x 30 x 3 in, Courtesy Collection of Mike Healy & Tim Walsh.

12. *The Line Up*, 2017, Chromogenic print, 27 x 18 in (each), Courtesy Tina Perry-Whitney & Ric Whitney.

13. *Whatcha See Is Whatcha Get*, 2017, Dimensions Variable, Courtesy the Artist and Vielmetter Los Angeles.

14. *What Color Is God? She Is Color (Blue)*, 2017, 36 x 24 x 61 in, Courtesy the Artist and Vielmetter Los Angeles.

15. *What Color Is God? She Is Color (Pink)*, 2017, 36 x 24 x 61 in, Courtesy the Artist and Vielmetter Los Angeles.