

MEDIA CONTACT:

Rebecca Klapper

805.966.5373 x104

press@mcasantabarbara.org



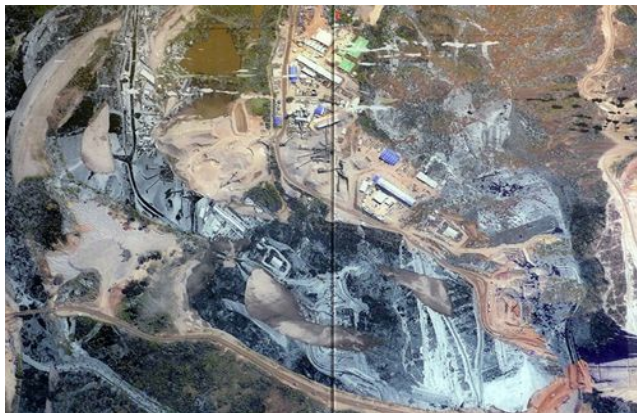
For Immediate Release.

Exhibition: *Beyond 2°* featuring Ursula Biemann and Paulo Tavares, Carolina Caycedo, Olga Kisseleva, Nicholas Mangan, Otobong Nkanga, Robert Zhao Renhui, Andrea Polli, Amie Siegel, and Melanie Smith

Opening reception: Saturday, March 12, 2016, 6 – 8 pm

Exhibition on view: March 13, 2016 - July 24, 2016

Museum of Contemporary Art Santa Barbara examines global warming, natural resource depletion, and other environmentally devastating circumstances in the exhibition *Beyond 2°*.



Left to right: Carolina Caycedo, *YUMA, or the Land of Friends*, 2014, Digital prints on glass, satellite images, Mural: 580x473 cm (46 pieces: 20 pieces 100x100 cm; 10 pieces 100x35 cm; 8 pieces 40x100 cm; 8 pieces 40x35 cm), Courtesy the Artist; Ursula Biemann, *Forest Law* by Ursula Biemann and Paulo Tavares, 2014, Video still, Courtesy the Artist

Beyond 2° is a group exhibition that presents a range of global artistic perspectives on the environmental and social effects of natural resource exploitation featuring Ursula Biemann (b. 1955, Zurich, CH) and Paulo Tavares (b. 1980, Campinas, BR), Carolina Caycedo (b. 1978, London, UK), Olga Kisseleva (b. St. Petersburg, RU), Nicholas Mangan (b. 1979, Geelong, AU), Otobong Nkanga (b. Kano, NG), Robert Zhao Renhui (b. 1983, Singapore, SG), Andrea Polli (b. Albuquerque, NM), Amie Siegel (b. 1974, Chicago, IL), and Melanie Smith (b. 1965, London, UK). Two degrees above pre-industrial temperature is widely agreed by countries as a threshold beyond which climate change risks become irreversibly high. The artists' works in this exhibition, while addressing various factors that lead to global warming, focus on ways in which environmentally destructive industries and activities gravely affect communities within which they operate. "This exhibition features a diverse array of projects by internationally renowned artists who are exploring climate issues based on in-depth research and

- MORE -

fieldwork,” says Brooke Kellaway, MCASB Associate Curator. “As society grows more impervious to the increasing frequency of disturbing assessment reports on the impacts of climate crisis, defeated ballot initiatives, and debates over the impacts of under-regulated industries, these artists’ works offer relevant and critical perspectives to timely and ever-complex questions around our relationship to nature.”

In multidisciplinary and collaborative projects ranging from painting, sculpture, and performance, the artists in this exhibition bring attention to the social, political, and cultural implications involved in natural resource-based operations and their artworks reflect large-scale infrastructural projects including open-pit mining, rubber tree farming, and hydroelectric dams that affect local ecologies. Their works call to question the many forces and systems, however subtle or blatant, that influence our relationship to landscape, and perception of its value.

Don’t miss the opening reception on Saturday, March 12, 2016, featuring an artist talk at 6 pm by artist Ursula Biemann and a 7:30 pm performance by artist Carolina Caycedo.* The reception will be free of charge and open to the public.

In addition to the artists’ works within the museum galleries, MCASB is partnering with local environmental organizations, universities, and other interested groups to program an off-site film series, performances, and interdisciplinary public programs. The popular *1st Thursdays* series at MCASB, **Curated Cocktails**, will be hosted by several of these environmental groups. The **Teen Arts Council (TAC)**, an advisory board comprised of eleven teenage members who encourage youth involvement in MCASB programming and the contemporary art community, will curate a separate exhibition inspired by these themes at the Art From Scrap gallery from March 19 - April 22, 2016, titled *Beyond 2^o: Millennial Impact*.

*This event marks MCASB's ongoing commitment to performance via our On Edge Performance Art Series and is funded in part by the National Endowment for the Arts.

Museum of Contemporary Art Santa Barbara (MCASB) exhibition and education programs are generously supported by Paseo Nuevo Shopping Center, the National Endowment for the Arts; Nordstrom; Towbes Foundation; Ann Jackson Family Foundation; Community Events & Festivals Grant Program using funds provided by the City of Santa Barbara in partnership with the Santa Barbara County Arts Commission; Mosher Foundation in honor of Barry Berkus, recommended by Dr. Bruce McFadden; High Tide Foundation, Andrea Lang Fund, and contributions from our Board of Trustees and many generous individuals. MCASB Curator's Council is gratefully acknowledged for their support. Additional significant support is provided by The James Irvine Foundation; Getty Foundation; Hutton Parker Foundation; Williams-Corbett Foundation, and Santa Barbara Foundation.

Special thanks to: KEYT, KSBY, *Santa Barbara Independent*, and Telegraph Brewing Company.

###

About Museum of Contemporary Art Santa Barbara:

Museum of Contemporary Art Santa Barbara (MCASB) is a non-profit, non-collecting museum dedicated to the exhibition, education, and cultivation of the arts of our time. Formerly Santa Barbara Contemporary Arts Forum (CAF), MCASB is the premier venue for contemporary art between Los Angeles and San Francisco. MCASB is located at the Paseo Nuevo Shopping Center Upper Arts Terrace in downtown Santa Barbara, CA. With the opening of the MCASB

Satellite @ Hotel Indigo Santa Barbara in February of 2012, Museum of Contemporary Art Santa Barbara becomes one museum with two locations. Located in the Hotel Indigo Santa Barbara at 121 State Street, the MCASB Satellite space features yearlong exhibitions of stimulating contemporary artworks.

Museum of Contemporary Art Santa Barbara (MCASB), 653 Paseo Nuevo, Santa Barbara, CA 93101

p: 805.966.5373

f: 805.962.1421

hello@mcasantabarbara.org

mcasantabarbara.org